

Sea Link

Volume 6: Environmental Statement

Document: 6.4.2.8
Part 2 Suffolk
Chapter 8
Air Quality - Figures

Planning Inspectorate Reference: EN020026

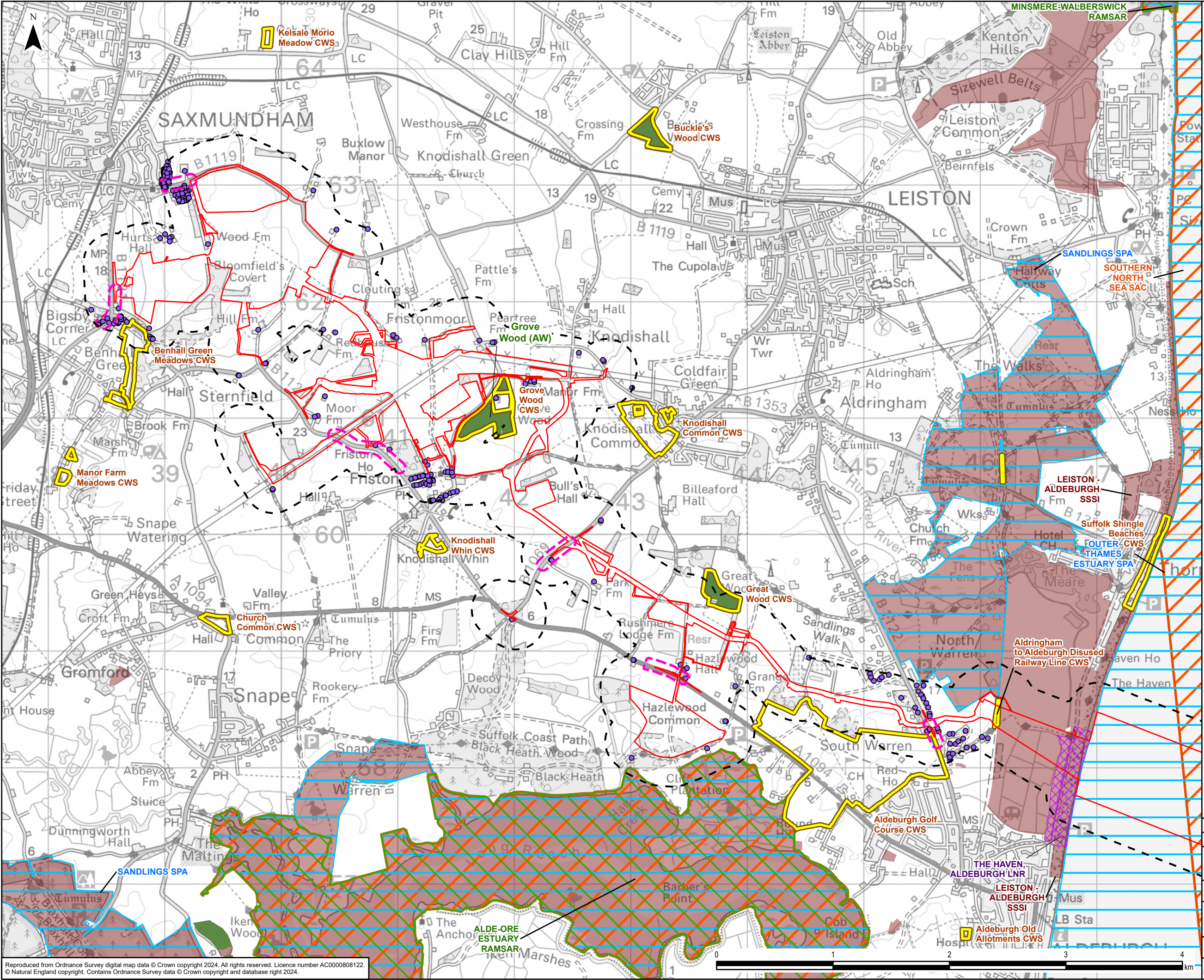
Version: A
March 2025

Infrastructure Planning (Applications: Prescribed Forms and Procedure)
Regulations 2009 Regulation 5(2)(a)

Contents

Application Document 6.4.2.8 Air Quality - Figures

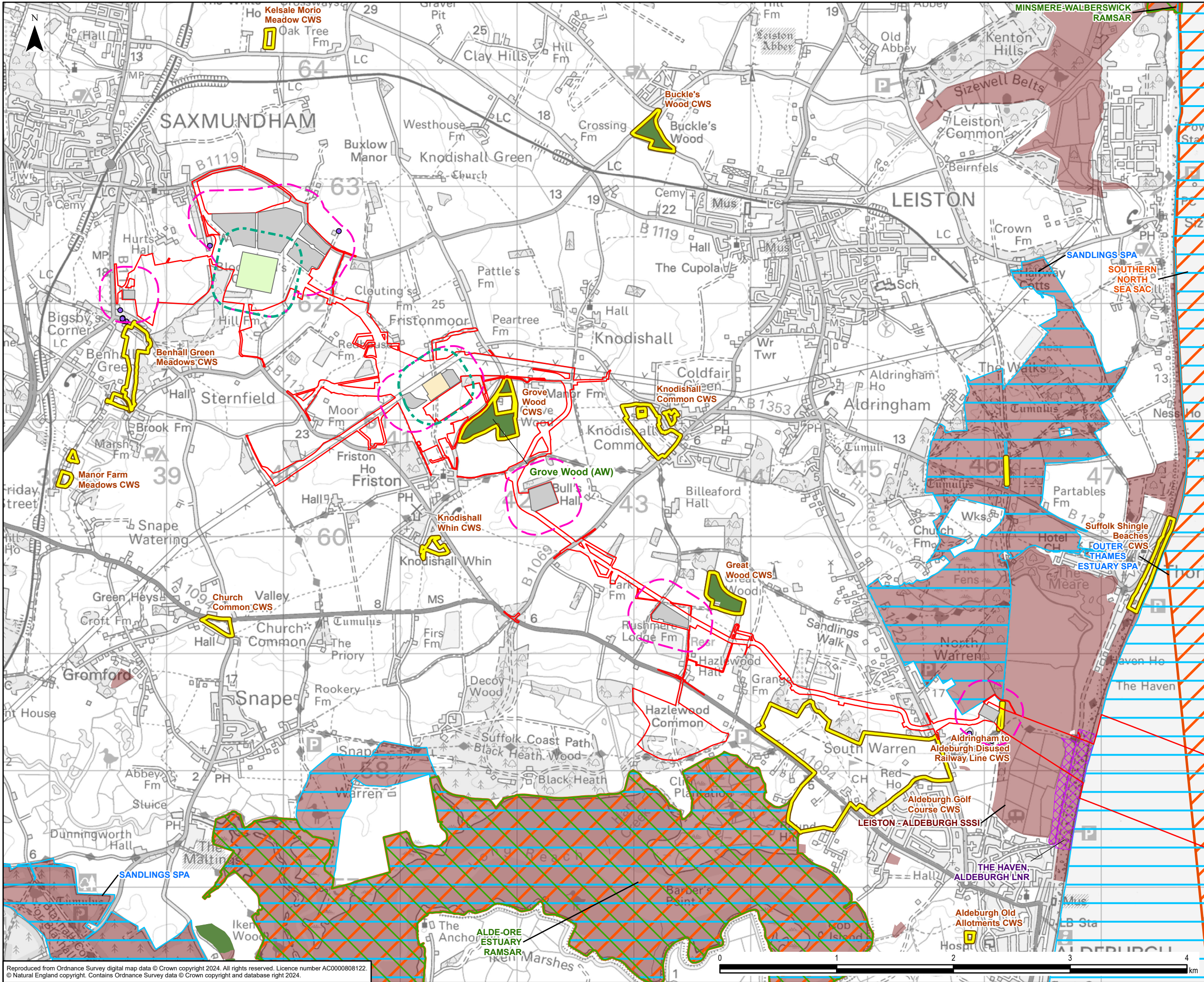
- Application Document 6.4.2.8.1 Construction Dust Assessment Study Area - Suffolk Onshore Scheme
- Application Document 6.4.2.8.2 NRMM Emissions and Back-Up Generator Emissions Study Area - Suffolk Onshore Scheme
- Application Document 6.4.2.8.3 Air Quality Baseline - Suffolk Onshore Scheme
- Application Document 6.4.2.8.4 Air Quality Receptor and Verification Locations - Suffolk Onshore Scheme



Legend

- Order Limits
- Construction Dust Study Area
- Trackout Dust Study Area
- Human Receptors
 - Residential
- Special Area of Conservation (SAC)
- Special Protection Area (SPA)
- Site of Special Scientific Interest (SSSI)
- Ramsar
- Ancient Woodland (AW)
- Local Nature Reserve (LNR)
- County Wildlife Site (CWS)

0	24/01/2025	ENVIRONMENTAL STATEMENT	EB	DF	HD
Rev	Date	Description	GIS	Chk	App
nationalgrid					
Scheme: SEA LINK					
Document Title: CONSTRUCTION DUST ASSESSMENT STUDY AREA - SUFFOLK ONSHORE SCHEME					
Creator: EB	Date: 24/01/2025	Checker: DF	Date: 24/01/2025	Approver: HD	Date: 24/01/2025
Document Ref: FIGURE 6.4.2.8.1	Scale: 1:30,000	Format: A3	Sheets: 1	Rev: 0	



Legend

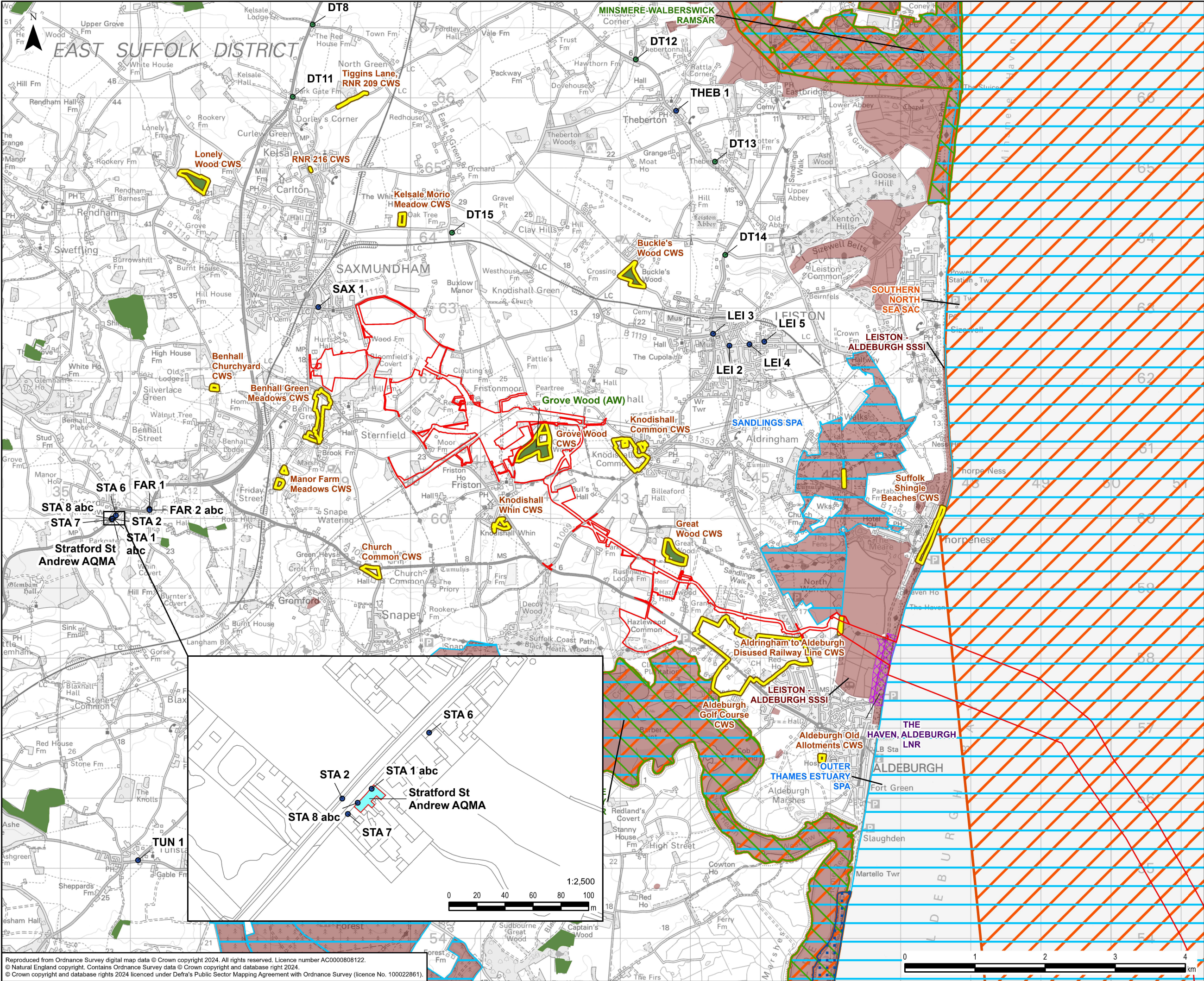
- Order Limits
- NRMM Emissions Study Area
- Backup Generator Emissions Study Area
- Construction Compound
- Substation Limits of Deviation
- Converter Station Limits of Deviation

Human Receptors

- Residential
- Special Area of Conservation (SAC)
- Special Protection Area (SPA)
- Site of Special Scientific Interest (SSSI)
- Ramsar
- Ancient Woodland (AW)
- Local Nature Reserve (LNR)
- National Nature Reserve (NNR)
- County Wildlife Site (CWS)

0	15/01/2025	ENVIRONMENTAL STATEMENT	EB	DF	HD
Rev	Date	Description	GIS	Chk	App

Scheme: SEA LINK					
Document Title: NRMM EMISSIONS AND BACK-UP GENERATOR EMISSIONS STUDY AREA - SUFFOLK ONSHORE SCHEME					
Creator: EB	Date: 15/01/2025	Checker: DF	Date: 15/01/2025	Approver: HD	Date: 15/01/2025
Document Ref: FIGURE 6.4.2.8.2	Scale: 1:30,000	Format: A3	Sheets: 1	Rev: 0	



Legend

- Order Limits
- Sizewell C Project Specific NO₂ Diffusion Tube Monitoring Locations
- East Suffolk Council NO₂ Diffusion Tube Monitoring Locations
- Air Quality Management Area (AQMA)
- Special Area of Conservation (SAC)
- Special Protection Area (SPA)
- Site of Special Scientific Interest (SSSI)
- Ramsar
- Ancient Woodland (AW)
- Local Nature Reserve (LNR)
- National Nature Reserve (NNR)
- County Wildlife Site (CWS)

0	24/01/2025	ENVIRONMENTAL STATEMENT	EB	DF	HD
Rev	Date	Description	GIS	Chk	App

Scheme: SEA LINK					
Document Title: AIR QUALITY BASELINE - SUFFOLK ONSHORE SCHEME					
Creator: EB	Date: 24/01/2025	Checker: DF	Date: 24/01/2025	Approver: HD	Date: 24/01/2025
Document Ref: FIGURE 6.4.2.8.3	Scale: 1:50,000	Format: A3	Sheets: 1	Rev: 0	

National Grid plc
National Grid House,
Warwick Technology Park,
Gallows Hill, Warwick.
CV34 6DA United Kingdom

Registered in England and Wales
No. 4031152
nationalgrid.com